

REPLACING THE PRINTHEAD

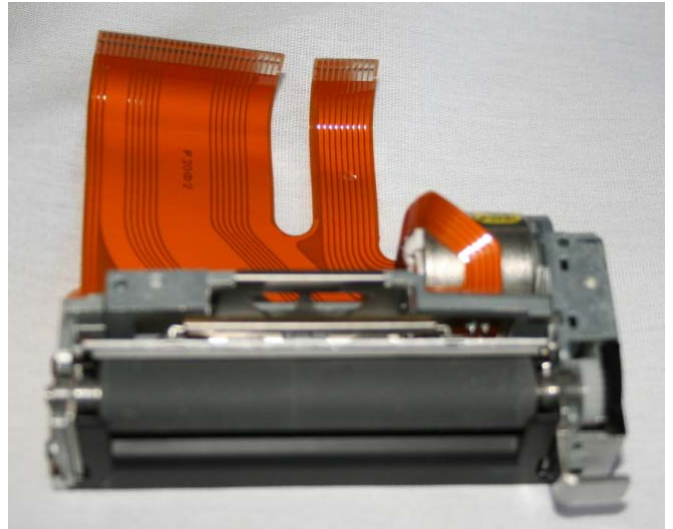
Use these instructions to replace the printhead assembly in the 9417 Printer.

Audience

These instructions are intended for a skilled service technician only. For additional information or assistance, call Service at 1-800-543-6650.

Cautions

- ◆ The 9417 printer contains devices that are sensitive to electrostatic discharge (ESD); failure to exercise caution can damage the printer. We recommend using an ESD wrist strap, grounding mat, or grounding workbench when performing maintenance on the printer.
- ◆ Flex connectors between components and board assemblies are extremely fragile; when damaged, they require component or board assembly replacement.



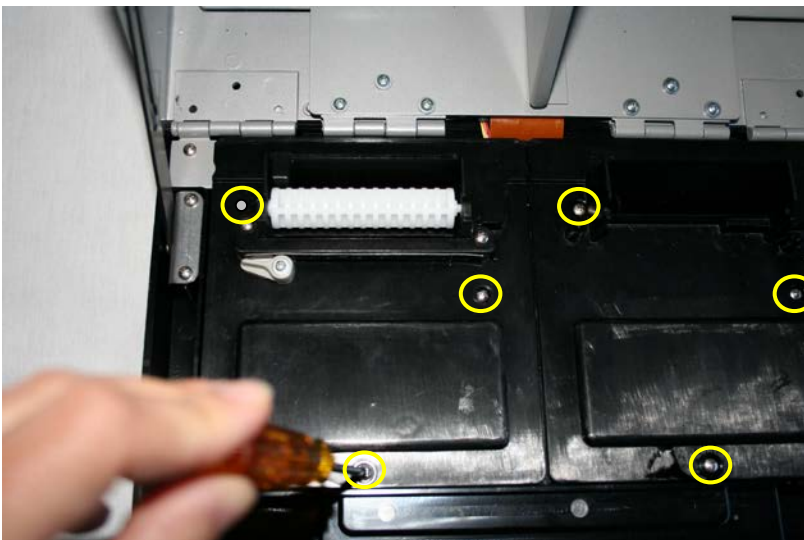
Required Tools

The procedures require the following:

- ◆ A hard, dry surface to set the printer on
- ◆ Phillips screwdriver

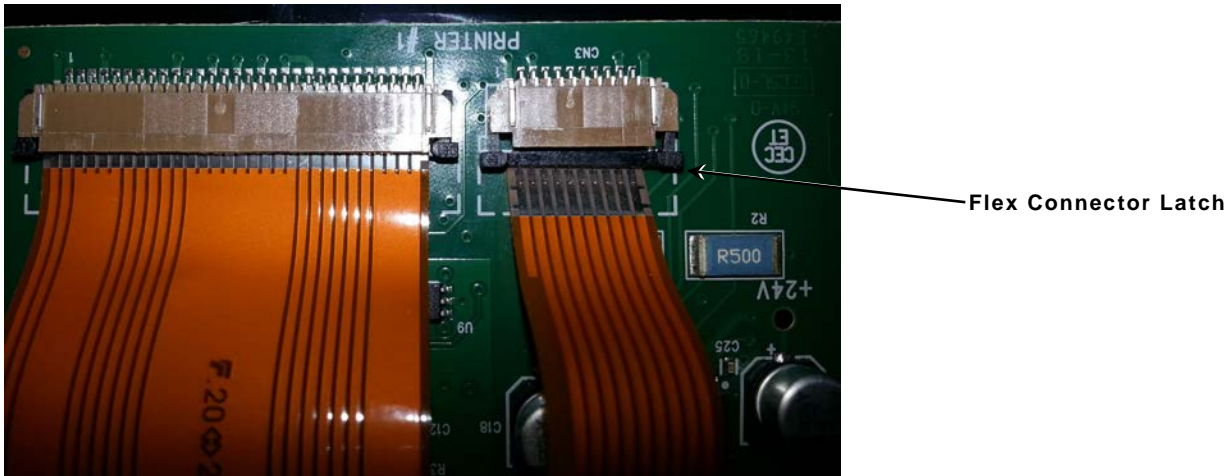
Removing the Printhead

1. Turn off the printer and unplug it from the electrical outlet.
2. Open the front cover.
3. Remove the supplies.
4. Remove the six screws that attach the print module covers.



5. Lift up the right then left printer cover; rest them out of the way.

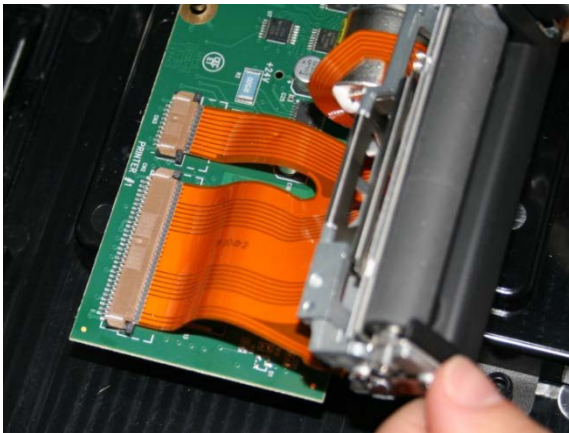
6. Lift out the printhead assembly.
7. Open the four black flex connector latches. Remove the flex from the flex connector



Note: Apply careful, even pressure on the latches when opening and closing.

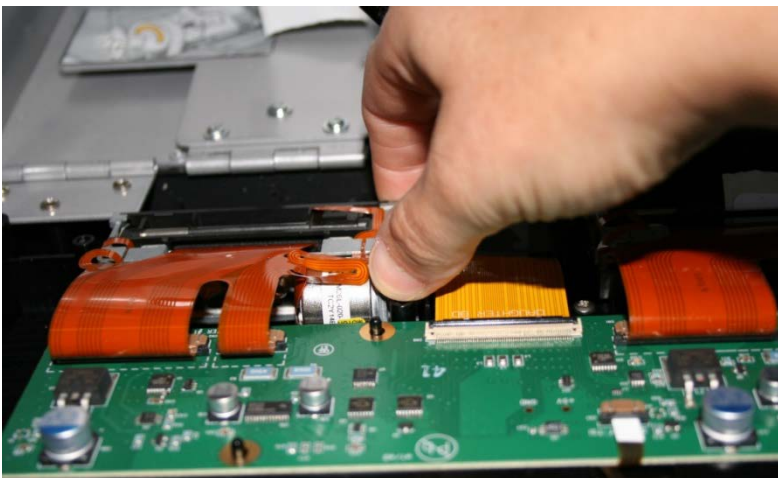
Installing the Printhead

1. Make sure the four black flex connector latches are open, then insert the printhead flex into the flex connector. Make sure the flex is inserted all the way into the connector.
2. Close all four of the black flex connector latches.



Note: Apply careful, even pressure on the latches when opening and closing.

3. Lay the printhead assembly into place.



4. Lay the left print module cover in place then lay the right print module cover in place.
5. Secure the printer covers in place.

