

Avery Dennison®

9444 Printer

User Manual

Each product and program carries a respective written warranty, the only warranty on which the customer can rely. Avery Dennison Corp. reserves the right to make changes in the product, the programs, and their availability at any time and without notice. Although Avery Dennison Corp. has made every effort to provide complete and accurate information in this manual, Avery Dennison Corp. shall not be liable for any omissions or inaccuracies. Any update will be incorporated in a later edition of this manual.

©2022 Avery Dennison Corp. All rights reserved. No part of this publication may be reproduced, transmitted, stored in a retrieval system, or translated into any language in any form by any means, without the prior written permission of Avery Dennison.

Trademarks

Avery Dennison® is a registered trademark of Avery Dennison Corporation.

Android is a trademark of Google LLC.

Bluetooth and the Bluetooth logos are trademarks owned by Bluetooth SIG, Inc., U.S.A.

All other brand and product names are trademarks of their respective holders.



Outside the U.S., send batteries to:

EMEA, 4 Awberry Court, Croxley Business Park, Hatters Lane, Watford, WD18 8PD

Avery Dennison
170 Monarch Lane
Miamisburg, OH 45342

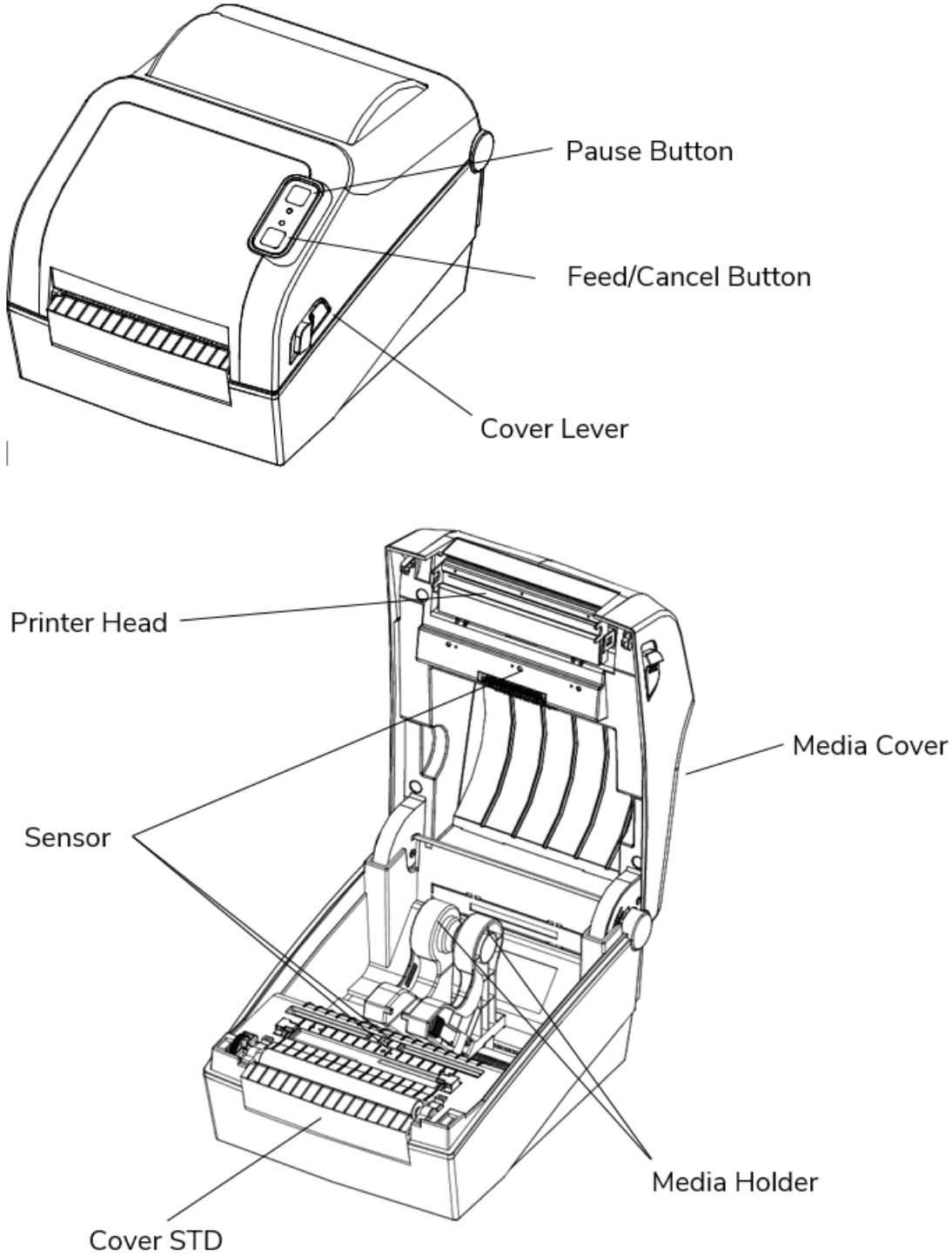
Table of Contents

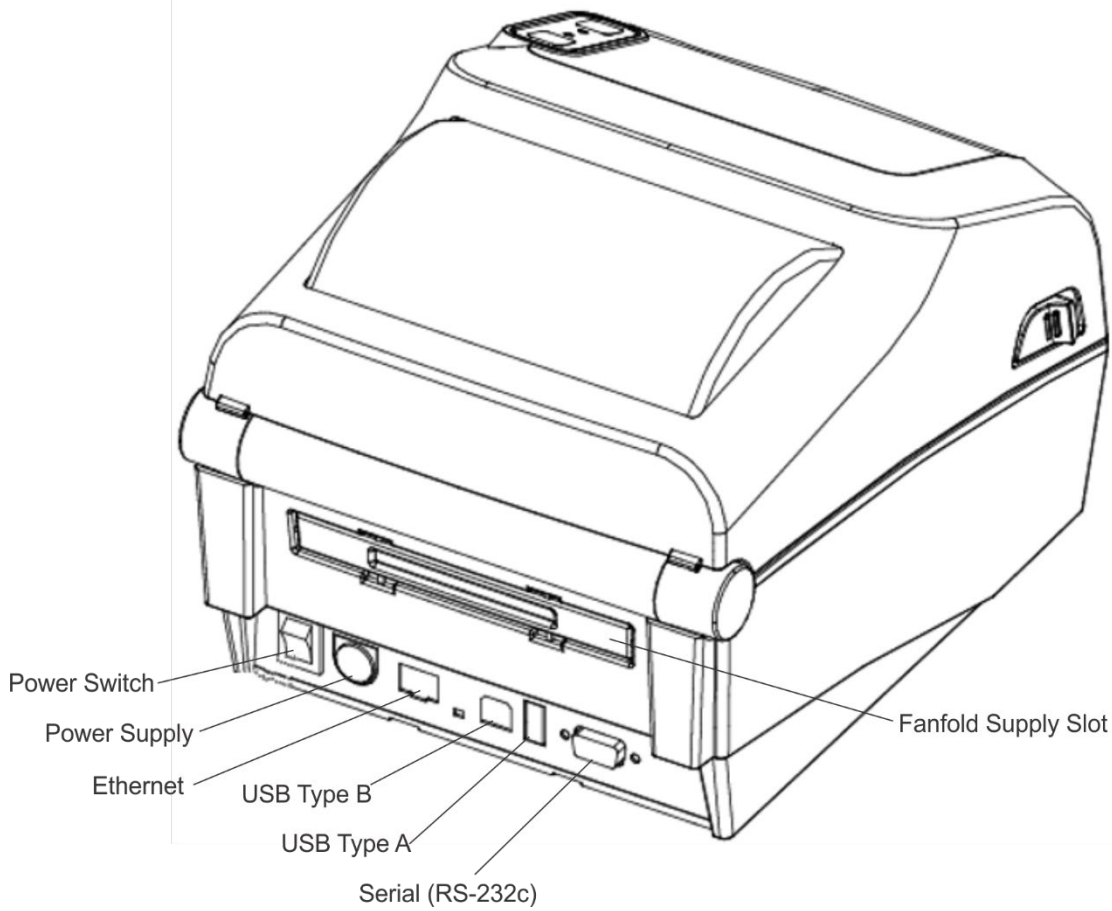
1	Getting Started.....	1
	About the Printer	1
	Power Connection	2
	USB Connection.....	3
2	Loading Supplies	5
	Loading for Non-Peel Mode	5
	Loading Supplies for Peel Mode.....	6
3	Control Panel	9
	Button Operations	9
	About the LEDs	9
	Pause and Cancel Operations.....	10
	Pause/Resume.....	10
	Print Cancellation	10
4	Using Bluetooth	11
	Bluetooth Connection.....	11
	Bluetooth Troubleshooting	11
5	Network Settings.....	13
	Supported Operating Systems	13
	Connecting the Printer and Host (PC).....	13
	LAN/WLAN Basic Configuration	13
	Configuration of LAN/WLAN Settings Using the Configuration Button	15
	LAN/WLAN Settings Using the Launch Browser Button.....	16
	WLAN Advanced Configuration	18
	Basic Configuration.....	23
6	Maintenance & Cleaning.....	25
	Cleaning the Printhead.....	25
	Cleaning the Sensors, Roller, and Paper Path	26
7	Printer Specifications.....	27

1 Getting Started

Find additional manuals on our Website (www.identificationsolutions.averydennison.com).

About the Printer

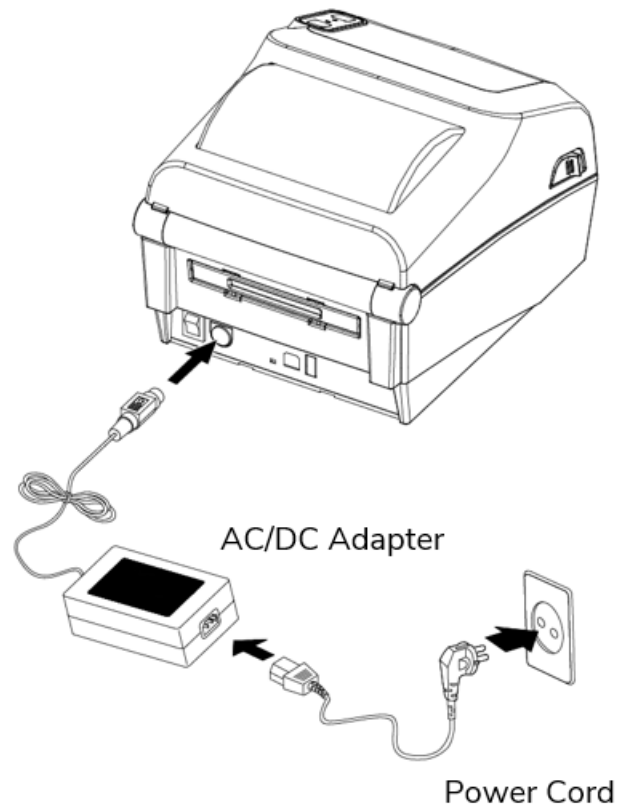




Power Connection

Connect power to the printer as shown. **Only use the adapter supplied with the printer.**

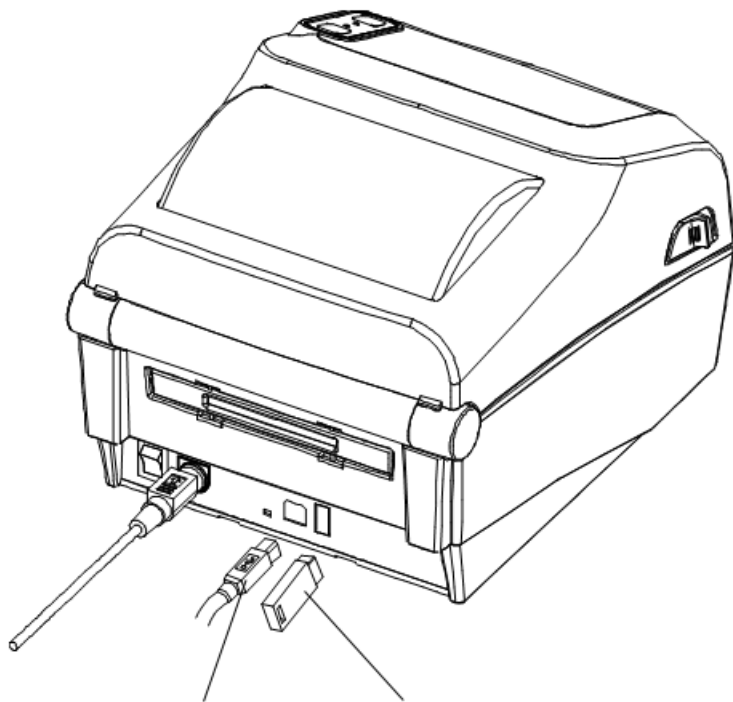
1. Turn off the printer.
2. Connect the AC adapter to the printer.
3. Connect the power cord to the AC adapter.
4. Connect the power cord to a grounded power outlet.



USB Connection

This printer supports the following USB Connections:

- USB Type B (requires a shielded cable, less than 1.8m long).
- USB-Type A (WLAN Dongle only).



USB B-Type Cable USB A-Type

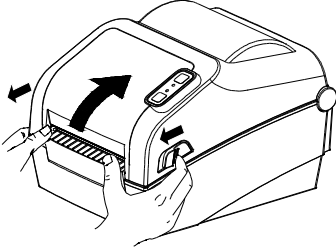
1. Turn off the printer.
2. Connect the USB to the printer.

2 Loading Supplies

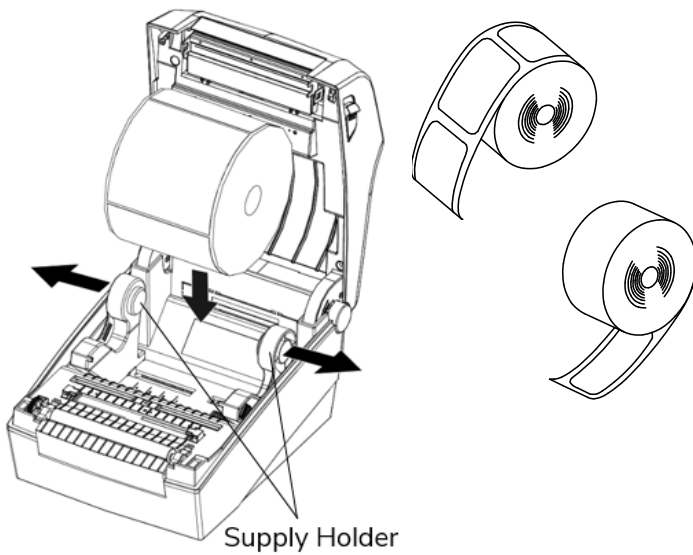
Supplies can be loaded for non-peel or peel mode.

Loading for Non-Peel Mode

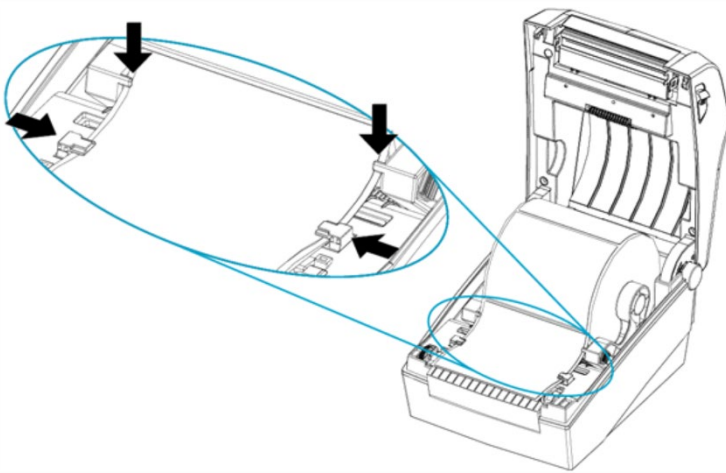
1. Open the Paper Cover.



2. Spread the supply holders and insert the supply roll. Make sure the printing side faces up.



3. Adjust the supply guides to the width of the paper.



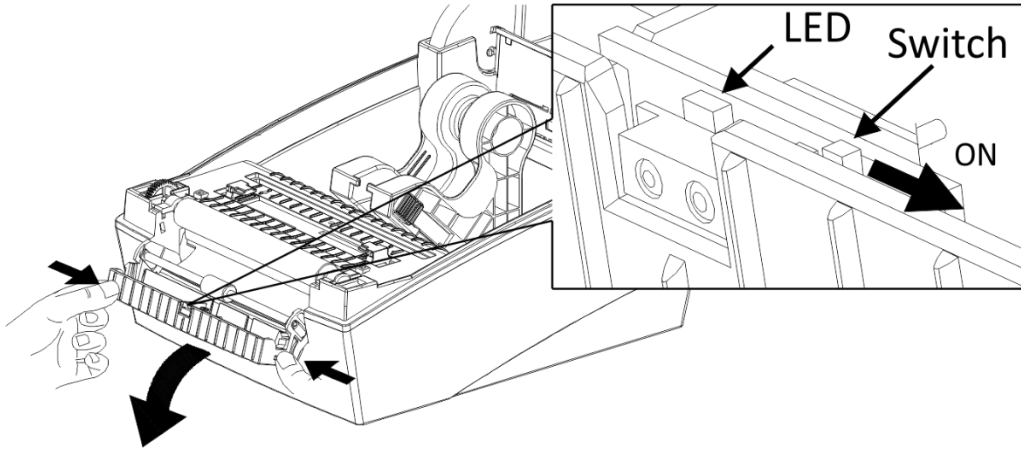
4. Close the Paper Cover until it clicks into place.

 Set the peel mode switch to **OFF** for non-peel mode.

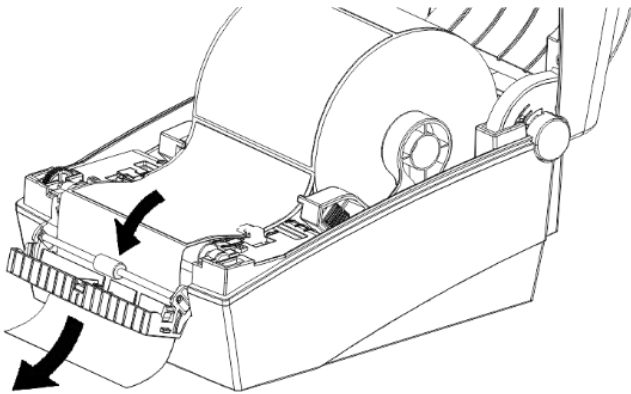
Loading Supplies for Peel Mode

Peel mode separates the label from the backing paper while printing. Peel mode can only be used with die cut label supplies.

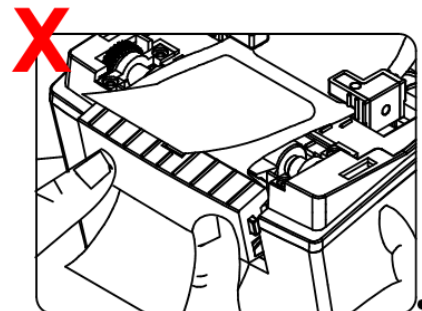
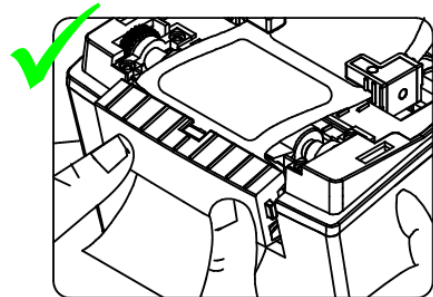
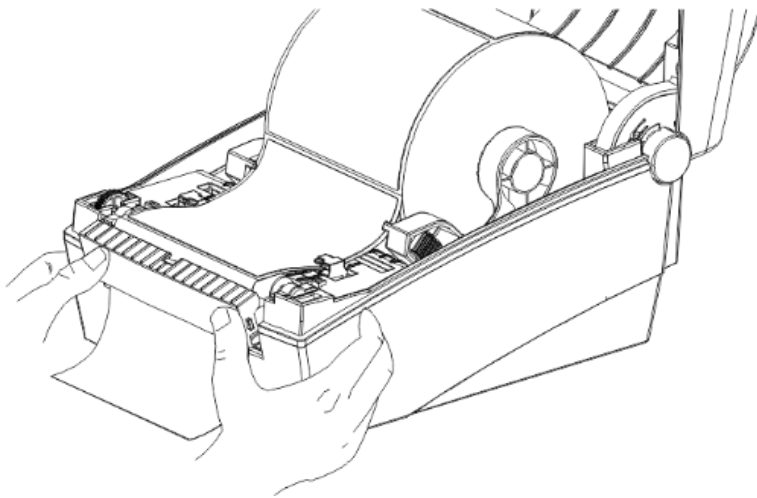
1. Open the paper cover.
2. Open the peel cover, set the peel mode switch to **ON**. Make sure the LED is on.



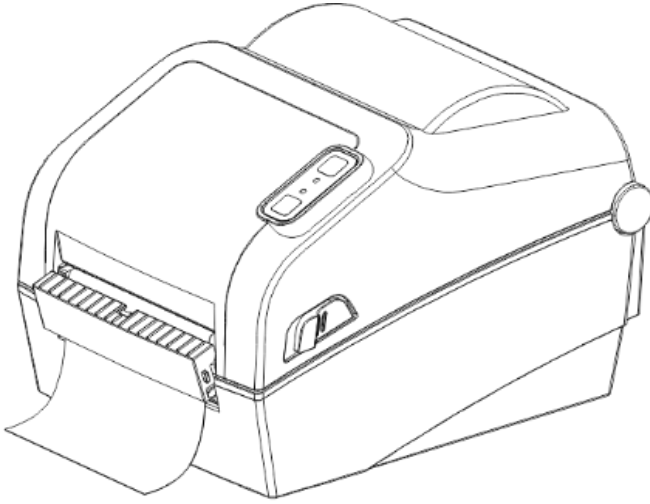
3. Remove one label then insert supply as shown.



4. Close the peel cover. The peel cover should close between labels, as shown in the top image.



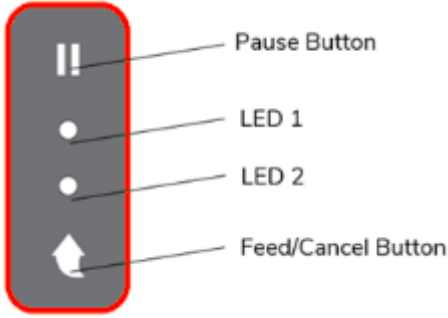
5. Close the cover until it clicks into place.



6. Turn the printer off then back on.

3 Control Panel

The printer's control panel consists of two buttons and two LEDs.



Button Operations

Printer state before operation	Button		Instructions	Printer operation mode
	Feed/Cancel	Pause		
Power OFF	Press		Hold while turning ON the printer.	Self-test Printing Mode (prints diagnostic labels)
Print Standby	Press		Press and release	Feed Mode
Print Standby		Press	Press the button for two seconds and continue to hold	Stand-alone configuration Mode
During printing	Press		Press the button for two seconds and continue to hold	Print Cancel Mode
During printing		Press	Press and release	Print Pause Mode

About the LEDs

LED 1		LED 2		Printer Status	
Color	Status	Color	Status		
Green	On	Green	On	Print standby mode	Print standby mode
Red	On	Orange	On	Error mode	Paper jam (gap/black mark is not sensed)
Red	On	Green	Blink	Error mode	Printer head overheating
Red	On	Red	Blink	Error mode	Paper Cover open
Red	On	Orange	Blink	Error mode	No paper
Red	On	-	Off	Error mode	Media calibration failure
Red	Blink	Red	Blink	Error mode	Auto-Cutter error

Orange	On	Orange	On	Mode switching notification	Mode switching notification
Green	Blink	Red	On	Wait for input	Print is paused temporarily. Wait for button input
Green	Blink	Green	Blink	Wait for input	Cover Close Mode. Wait for button input
Green	On	Red	Blink	Wait for input	Print Cancel Mode. Wait for button input

Pause and Cancel Operations

During multiple-page print jobs, the Pause and Cancel button can be used to pause printing and/or cancel the print job.

Pause/Resume

1. While printing labels, press the **Pause** button to temporarily stop printing.
2. The printer pauses after printing the current label and the status of LEDs are:
 - LED 1: Green Blink
 - LED 2: Red On
3. While the print job is paused, press the Pause button again to resume printing.

Print Cancellation

1. During label printing or pause mode, press the **Cancel** button to cancel the print job.
2. The following processes occur in print cancel mode.
 - All label printing cancelled
 - All data received in the printer communications buffer deleted.
 - All received data deleted.
3. The LED Status in the print cancel mode is:
 - LED 1: Green On
 - LED 2: Red Blink
4. While in the print cancel mode, press the Cancel button again to return to print standby mode.

4 Using Bluetooth

The printer's Bluetooth® can be used with a smart device.

Bluetooth Connection

Follow the Bluetooth pairing instructions for your smart device to connect to the 9444 Printer.

When connecting with the 9444 Printer via Bluetooth your smart device should list:

Device Name: *9444*

Password Default: 0000

Bluetooth Troubleshooting

- To connect the printer with a Bluetooth device, the devices must be within 328 feet (100 meters) of one another. The connection can be lost if the distance between devices exceeds 328 feet (100 meters).
- If cement walls or other obstacles are present, the connection distance is reduced.
- Transmission can be interrupted if a device (such as a microwave oven, wireless LAN, etc.) that uses the same frequency is in the area. Separate the printer and Bluetooth-enabled device from such interrupting devices by at least 16 feet (5 meters).

5 Network Settings

To set your printer's network settings, install the Net Configuration Tool on a PC running the Microsoft Windows OS.

Supported Operating Systems

The following operating systems are supported:

- Microsoft Windows 7 (32bit/64bit)
- Microsoft Windows 8 (32bit/64bit)
- Microsoft Windows 8.1 (32bit/64bit)
- Microsoft Windows 10 (32bit/64bit)
- Microsoft Windows Server 2008 (32bit/64bit)
- Microsoft Windows Server 2008R2 (64bit)
- Microsoft Windows Server 2012/2012R2 (64bit)
- Microsoft Windows Server 2016 (64bit)
- Microsoft Windows Server 2019 (64bit)

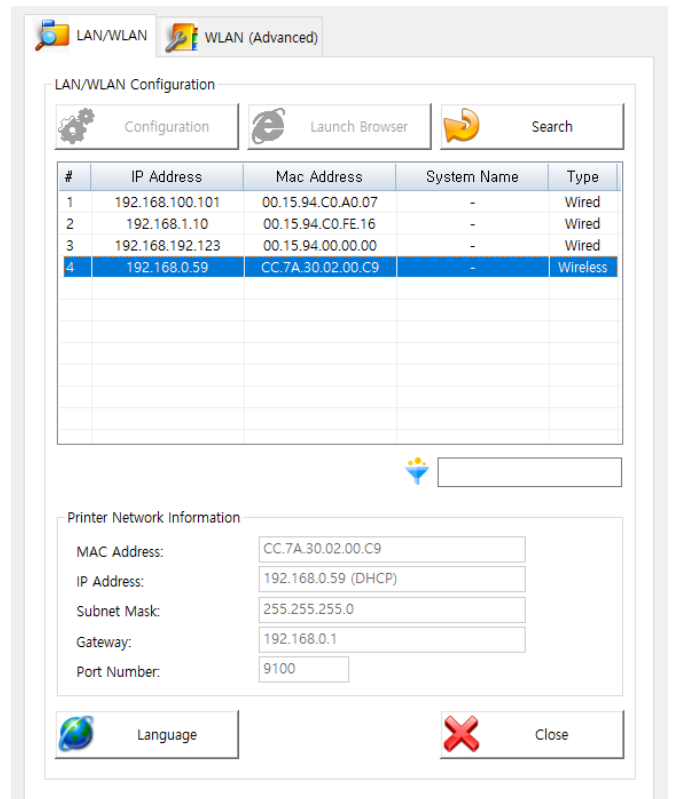
Connecting the Printer and Host (PC)

To configure **LAN settings**, connect the Ethernet cable to the printer while the host (PC) and printer are connected to the same network. For configuring **WLAN settings**, the host (PC) and printer should be connected to the same Wi-Fi Access Point or connected to each other using Wi-Fi Direct (P2P).

To configure the **the printer's wireless network advanced settings** (all configurable WLAN settings), the printer must be connected through a serial port cable or USB cable.

LAN/WLAN Basic Configuration

The **LAN/WLAN tab** allows you to search printers connected to the same LAN/WLAN network and configure the printer's network settings to enable communication between the printer and host. You can also configure the printer's network settings using a web browser.

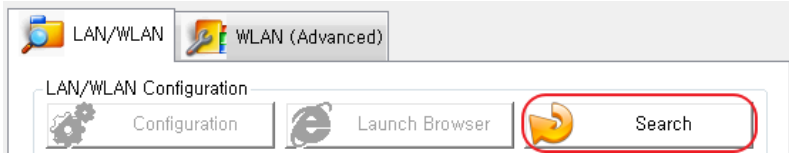


The following settings can be configured using the Net Configuration Tool. For WLAN, there are other settings beyond those listed below. Available WLAN settings may vary depending on the functions supported by the printer's WLAN module.

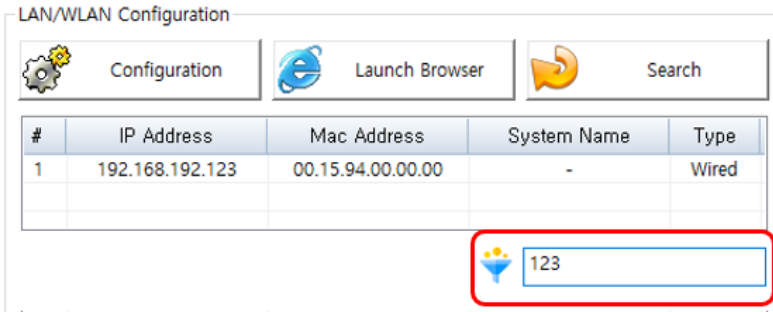
Settings	Description																
IP Address Assignment Method	Assign IP address manually or automatically through DHCP. If the network does not support DHCP, you must assign the IP address manually.																
IP Address	This information is required for LAN/WLAN communication and a unique IP address must be entered. The communication port is set to 9100 by default. You have to change the port number via reference below table to use another port.																
Subnet Mask																	
Gateway																	
Port Number	<table border="1"> <thead> <tr> <th data-bbox="347 598 654 646">Port Number</th> <th data-bbox="654 598 899 646">Description</th> <th data-bbox="899 598 1068 646">TCP/UDP</th> <th data-bbox="1068 598 1341 646">Notes</th> </tr> </thead> <tbody> <tr> <td data-bbox="347 646 654 695">9100, 6101, 9300</td> <td data-bbox="654 646 899 695">Printing</td> <td data-bbox="899 646 1068 695">TCP</td> <td data-bbox="1068 646 1341 695">Used for printing</td> </tr> <tr> <td data-bbox="347 695 654 743">80</td> <td data-bbox="654 695 899 743">HTTP</td> <td data-bbox="899 695 1068 743">TCP</td> <td data-bbox="1068 695 1341 743">Web page</td> </tr> <tr> <td data-bbox="347 743 654 842">3337, 9000</td> <td data-bbox="654 743 899 842">Device Management</td> <td data-bbox="899 743 1068 842">UDP</td> <td data-bbox="1068 743 1341 842">Bixolon Device Discovery/Setting</td> </tr> </tbody> </table>	Port Number	Description	TCP/UDP	Notes	9100, 6101, 9300	Printing	TCP	Used for printing	80	HTTP	TCP	Web page	3337, 9000	Device Management	UDP	Bixolon Device Discovery/Setting
	Port Number	Description	TCP/UDP	Notes													
	9100, 6101, 9300	Printing	TCP	Used for printing													
	80	HTTP	TCP	Web page													
3337, 9000	Device Management	UDP	Bixolon Device Discovery/Setting														
Inactivity Time	If there is no communication between the host and printer during the set period of time, the connection will be closed automatically. The value can be set between 0 and 3600 seconds (1 hour). If set to 0, this function is disabled.																
System Name	<p>A string that indicates the WLAN printer. A maximum of 64 characters can be entered.</p> <p>※ This string does not display on certain printers.</p>																

Configuration of LAN/WLAN Settings Using the Configuration Button

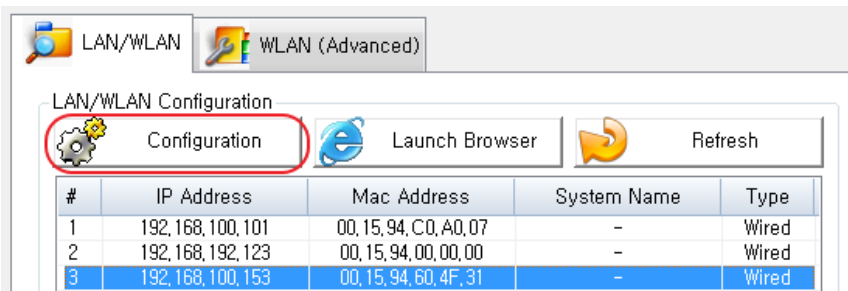
1. Check to make sure the printer is switched on.
2. Click the Search button to search for printers on the network.



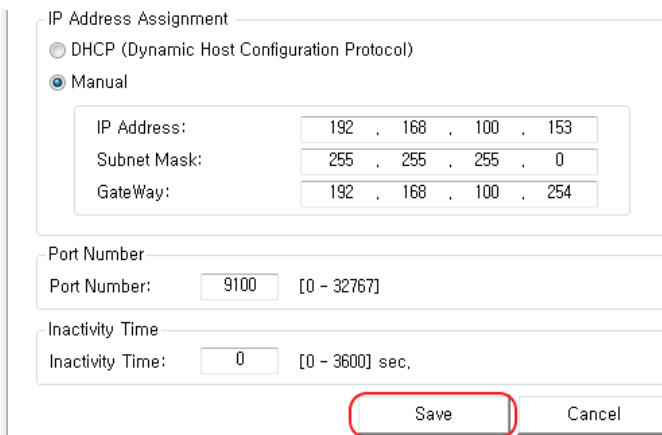
You can enter text in the filter text box so that your search results in only devices containig that text.



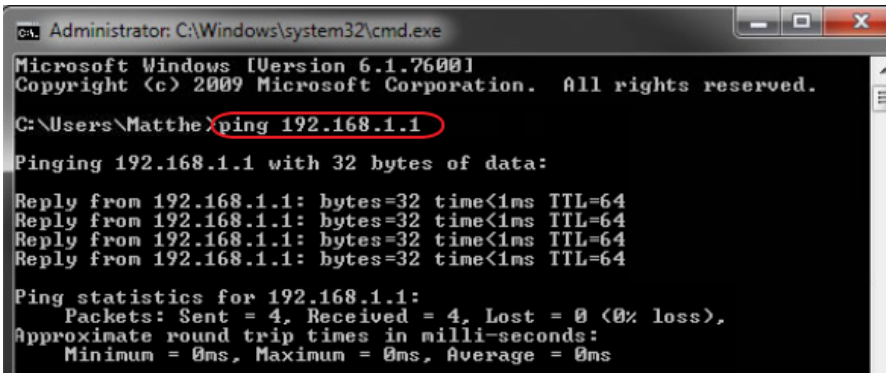
3. If the Security Alert message pops up, click either "**Unblock**" or "**Allow access**".
4. From the search results, click the MAC address (Media Access Control Address) or IP address (Internet Protocol Address) of the printer you want to configure.
5. Click the **Configuration** button (or double-click the item you want to configure).



6. Configure the network settings of the printer. Once the network settings are configured, the utility automatically searches for printers on the network.
7. Click the Save button.

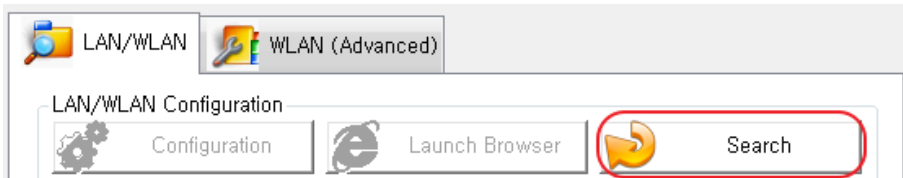


- Use a ping test to check the connection with the printer. Open a Windows command prompt and type the ping test command: ping <printer's IP address>



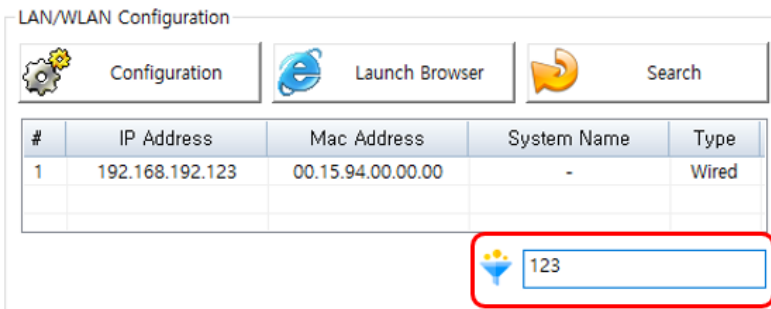
LAN/WLAN Settings Using the Launch Browser Button

- Check to make sure the printer is switched on.
- Click the Search button to search for printers on the network.

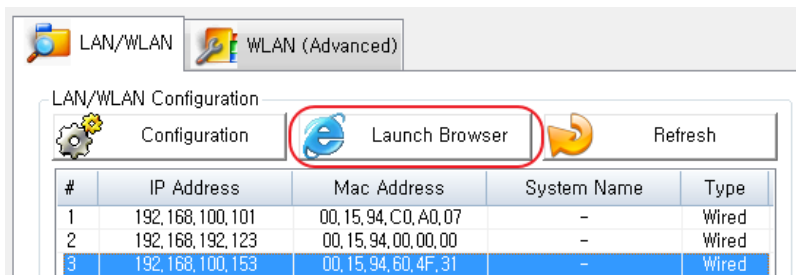


- If the Security Alert message pops up, click either "Unblock" or "Allow access".
- From the search results, click the MAC address (Media Access Control Address) or IP address (Internet Protocol Address) of the printer you want to configure.

You can enter text in the filter text box so that your search results in only devices containig that text.



- Click the Launch Brower button.



If the printer failed to get an IP address from DHCP Server, or and invalid IP address was assigned by the user, you cannot access the web page for network configuration from the printer.

- If prompted to login to change WLAN settings using the web browser, the default ID and password are:
 - User ID: "admin"
 - Password: "password"

WLAN Configuration

Sign in with your

ID	admin
Password	password

LOGIN

- Modify/Enter settings as needed.
- Click **Submit** to save the changes.

WLAN Configuration

Function	Set-up
Network Mode	InfraNetwork
SSID	BXLSW
Inactivity Time	0
IP Assignment Method	Automatic Allocation(DHCP)
IP Address	192 168 0 164
Subnet Mask	255 255 255 0
Gateway	192 168 0 1

SUBMIT

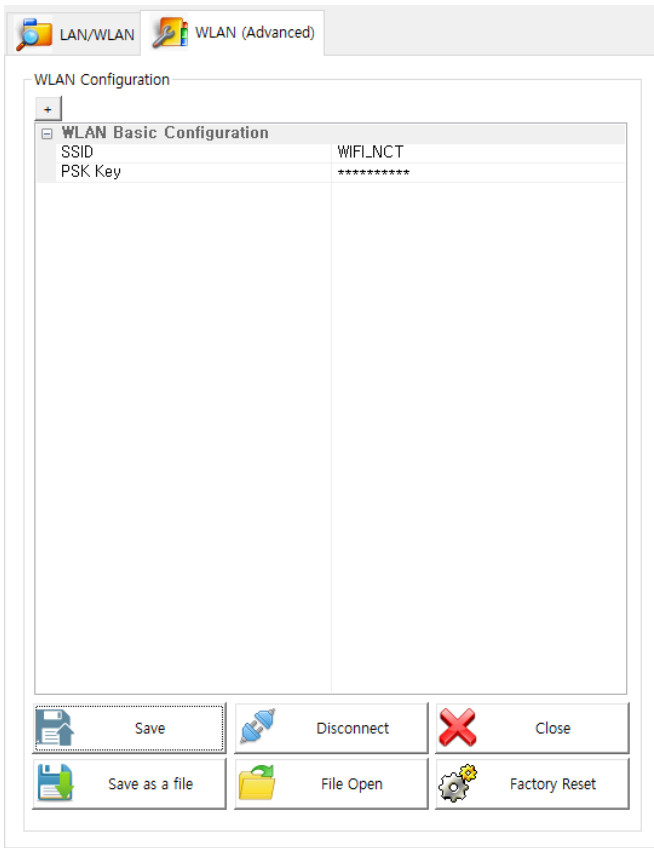
- Use a ping test to check the connection with the printer. Open a Windows command prompt and type the ping test command: ping <printer's IP address>


```
C:\Users\Matthe>ping 192.168.1.1
Pinging 192.168.1.1 with 32 bytes of data:
Reply from 192.168.1.1: bytes=32 time<1ms TTL=64
Reply from 192.168.1.1: bytes=32 time<1ms TTL=64
Reply from 192.168.1.1: bytes=32 time<1ms TTL=64
Reply from 192.168.1.1: bytes=32 time<1ms TTL=64


Ping statistics for 192.168.1.1:
    Packets: Sent = 4, Received = 4, Lost = 0 (0% loss),
    Approximate round trip times in milli-seconds:
        Minimum = 0ms, Maximum = 0ms, Average = 0ms
```

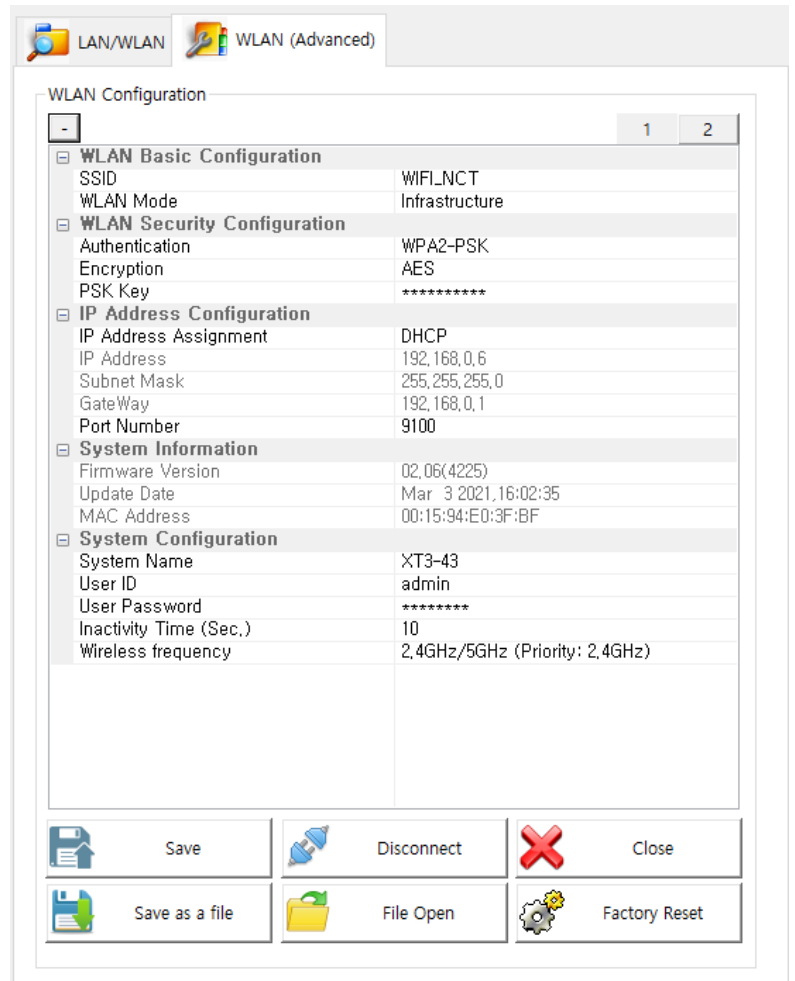
WLAN Advanced Configuration

The **WLAN (Advanced)** tab allows you to configure the printer's WLAN settings by connecting to the printer with a cable (serial or USB).

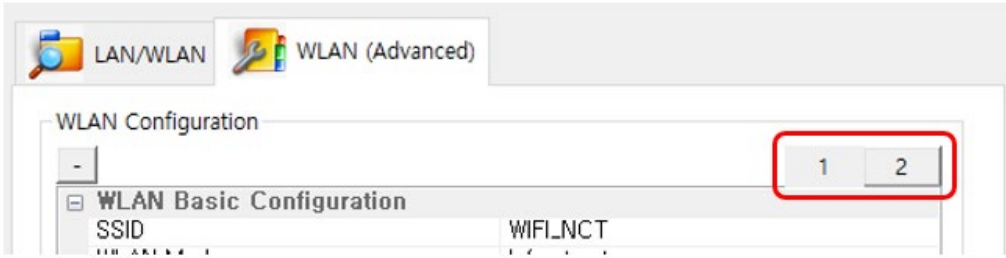


Click the  button at the top to enter the detailed setting screen.

Click the  button again to return to the simple configuration.



The following WLAN settings can be configured. Tab 1 includes the settings frequently configured while Tab 2 includes the rest of the settings.



WLAN Basic Configuration	Description
SSID (Service Set Identifier)	A unique identifier that is included in all data header sent via WLAN. A maximum of 32 characters can be entered.
WLAN Mode	Choose one of the following WLAN connection methods: <ul style="list-style-type: none"> - Infrastructure - Ad-Hoc - Wi-Fi Direct - Soft AP(Access Point) ※ Certain models do not support Wi-Fi Direct and Soft AP.
Ad-Hoc Channel	Choose between 1 and 14.
Wi-Fi Direct Channel	Choose 1, 6 or 11.
Wi-Fi Direct PIN Code	Enter 4 or 8 digit number.

WLAN Security Configuration	Description
Authentication	Choose one of the following authentication methods: <ul style="list-style-type: none"> - Open System - Shared Key - WPA-PSK - WPA2-PSK - WPA-EAP - WPA2-EAP
Encryption	Choose one of the following encryption methods: <ul style="list-style-type: none"> - None - WEP-64 - WEP-128 - TKIP - AES - AES + TKIP
WEP-64 Key	Enter 5-letter key or 10-digit hexadecimal number. ※ Only characters that can be entered on the ASCII code table are allowed.
WEP-128 Key	Enter 13-letter key or 26-digit hexadecimal number. ※ Only characters that can be entered on the ASCII code table are allowed.
PSK Key	Enter at least 8-letter key. ※ Only characters that can be entered on the ASCII code table are allowed. A maximum of 63 characters can be entered.
EAP Mode	Choose one of the following EAP Modes: <ul style="list-style-type: none"> - EAP-PEAP - EAP-TTLS - EAP-TLS - EAP-LEAP - EAP-FAST
EAP ID	Enter a maximum of 32 characters for EAP ID.
EAP Password	Enter a maximum of 32 characters for EAP password.

IP Address Configuration	Description																
IP Address Assignment	Assign the IP address manually or automatically through DHCP. If the network does not support DHCP, you have to assign IP address manually.																
IP Address	This information is required for LAN/WLAN communication and unique IP address must be entered. The communication port is set to 9100 by default. You have to change the port number via reference below table to use another port.																
Subnet mask																	
Gateway																	
Port Number																	
	<table border="1"> <thead> <tr> <th>Port Number</th> <th>Description</th> <th>TCP/UDP</th> <th>Notes</th> </tr> </thead> <tbody> <tr> <td>9100, 6101, 9300</td> <td>Printing</td> <td>TCP</td> <td>Used for printing</td> </tr> <tr> <td>80</td> <td>HTTP</td> <td>TCP</td> <td>Web page</td> </tr> <tr> <td>3337, 9000</td> <td>Device Management</td> <td>UDP</td> <td>Bixelon Device Discovery/Setting</td> </tr> </tbody> </table>	Port Number	Description	TCP/UDP	Notes	9100, 6101, 9300	Printing	TCP	Used for printing	80	HTTP	TCP	Web page	3337, 9000	Device Management	UDP	Bixelon Device Discovery/Setting
Port Number	Description	TCP/UDP	Notes														
9100, 6101, 9300	Printing	TCP	Used for printing														
80	HTTP	TCP	Web page														
3337, 9000	Device Management	UDP	Bixelon Device Discovery/Setting														

System Configuration	Description								
System Name	This string indicates the WLAN printer. A maximum of 64 characters can be entered. ⊗ This string may not be shown in certain printers.								
User ID	User ID and Password are used to access a printer from a web browser. A maximum of 32 characters can be entered.								
User Password									
Inactivity Time	If there is no communication between the host and printer during the set period of time, the connection will be closed automatically. The value can be set between 0 and 3600 seconds (1 hour) by a unit of second. If set to 0, this function is disabled.								
Wireless Frequency	<table border="1"> <tbody> <tr> <td>2.4GHz</td> <td>2.4GHz is used for frequency.</td> </tr> <tr> <td>5.0GHz</td> <td>5.0GHz is used for frequency.</td> </tr> <tr> <td>2.4GHz/5.0GHz (Priority: 2.4GHz)</td> <td>Both 2.4GHz/5.0GHz are used. (2.4GHz has a higher priority.)</td> </tr> <tr> <td>2.4GHz/5.0GHz (Priority: 5.0GHz)</td> <td>Both 2.4GHz/5.0GHz are used. (5.0GHz has a higher priority.)</td> </tr> </tbody> </table> <p>⊗ You may not be able to choose frequency in certain printers.</p>	2.4GHz	2.4GHz is used for frequency.	5.0GHz	5.0GHz is used for frequency.	2.4GHz/5.0GHz (Priority: 2.4GHz)	Both 2.4GHz/5.0GHz are used. (2.4GHz has a higher priority.)	2.4GHz/5.0GHz (Priority: 5.0GHz)	Both 2.4GHz/5.0GHz are used. (5.0GHz has a higher priority.)
2.4GHz	2.4GHz is used for frequency.								
5.0GHz	5.0GHz is used for frequency.								
2.4GHz/5.0GHz (Priority: 2.4GHz)	Both 2.4GHz/5.0GHz are used. (2.4GHz has a higher priority.)								
2.4GHz/5.0GHz (Priority: 5.0GHz)	Both 2.4GHz/5.0GHz are used. (5.0GHz has a higher priority.)								

Protocol	Description
HTTPS	HTTPS (Hypertext Transfer Protocol over Secure Socket Layer) is a security enhanced version of HTTP. You can configure WLAN settings using the HTTPS protocol on a web browser. ※ This may not be supported by certain printers.
TELNET	Using the TELNET protocol, you can configure WLAN settings by TELNET interaction. ※ This may not be supported by certain printers.
FTP	Using the FTP protocol, you can configure WLAN settings by editing the file related to WLAN information. ※ This may not be supported by certain printers.
SNMP	MIB-2 (management information base-2) information can be read and written. ※ This may not be supported by certain printers.

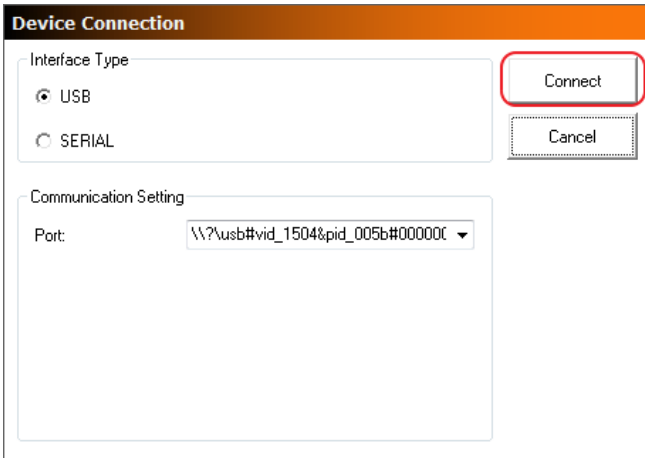
SNMP	Description
SNMP Community Name (Read)	This string indicates the name for trap reading.
SNMP Community Name (Write)	This string indicates the name for trap writing.
SNMP Trap Community	This string indicates the name for trap community.
SNMP Trap IP Address	This string indicates IP address for trap Server.

Certificate Upload	Description
Certificate Type	Select the type of certificate to download to the printer. - CA (Certificate Authority) - Client Key - Client PEM
Certificate File	Start downloading by selecting the type of certificate to download to the printer.

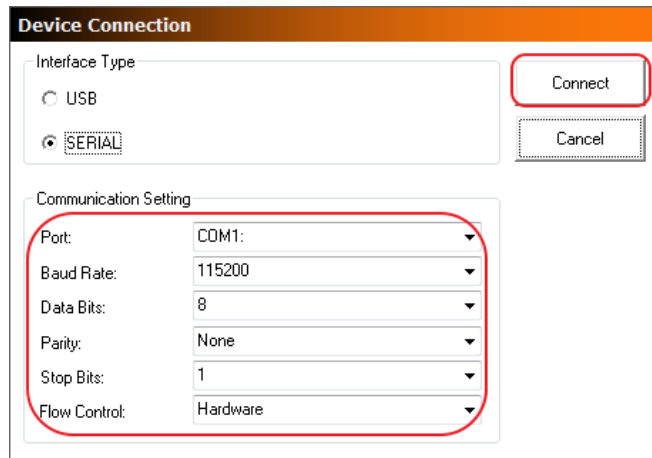
Certificate Name	Description
CA	A string representing the name of each downloaded certificate. Each certificate name is a file name used to download the certificate.
Client Key	
Client PEM	

Basic Configuration

1. Turn ON the printer.
2. Connect the printer to the host PC using a serial or USB cable.
3. Click the Connect button in the WLAN (Advanced) tab.
4. Choose the Interface Type on the Device Connection window and click the **Connect** button.

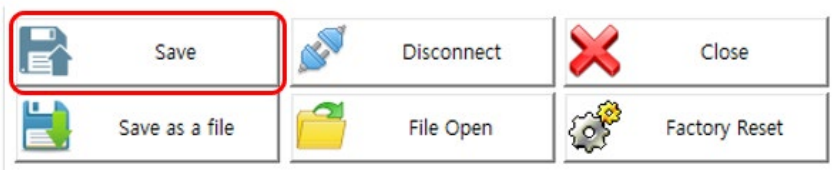


When using a serial cable, check the serial communication settings on the printer and change them to the settings as shown in the image. It takes up to 15 seconds to receive WLAN settings on the printer.



Check the WLAN settings imported from the printer. Make any necessary changes according to your operating environment.

1. Click Save to apply the WLAN settings. The message shows on the screen when the WLAN settings are changed successfully.



2. Reboot the printer.

6 Maintenance & Cleaning

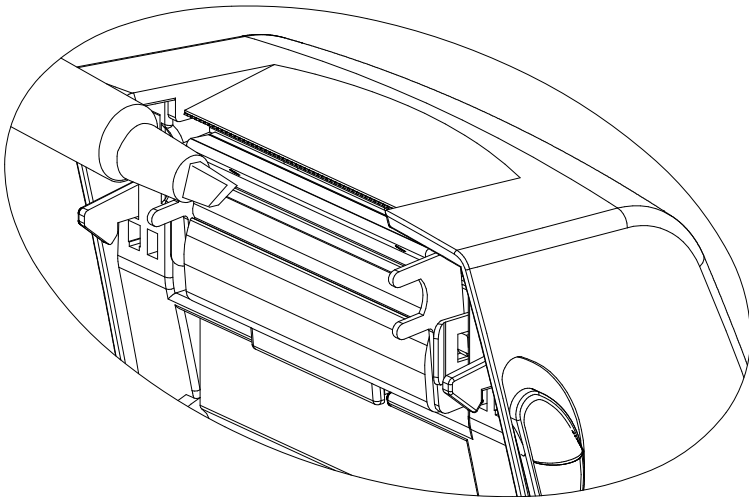
Print quality can be affected by dust, adhesive, or other materials stuck to the printhead or inside the printer.

CAUTION


- ◆ Turn off the printer before cleaning.
- ◆ The printhead can get very hot from printing; turn the printer off and wait 2~3 minutes to allow it to cool.
- ◆ Do not touch the heated portion of the printhead.
- ◆ The printhead is susceptible to damage from static electricity; ground yourself before cleaning.
- ◆ Gently clean the printhead to avoid scratches and/or damage.

Cleaning the Printhead

1. Turn off the printer.
2. Open the paper cover.
3. Use a cleaning pen to clean the printhead. Wipe the pen from the center of the printhead to the edges.
4. Allow the printhead to dry completely (1~2 minutes) before use.

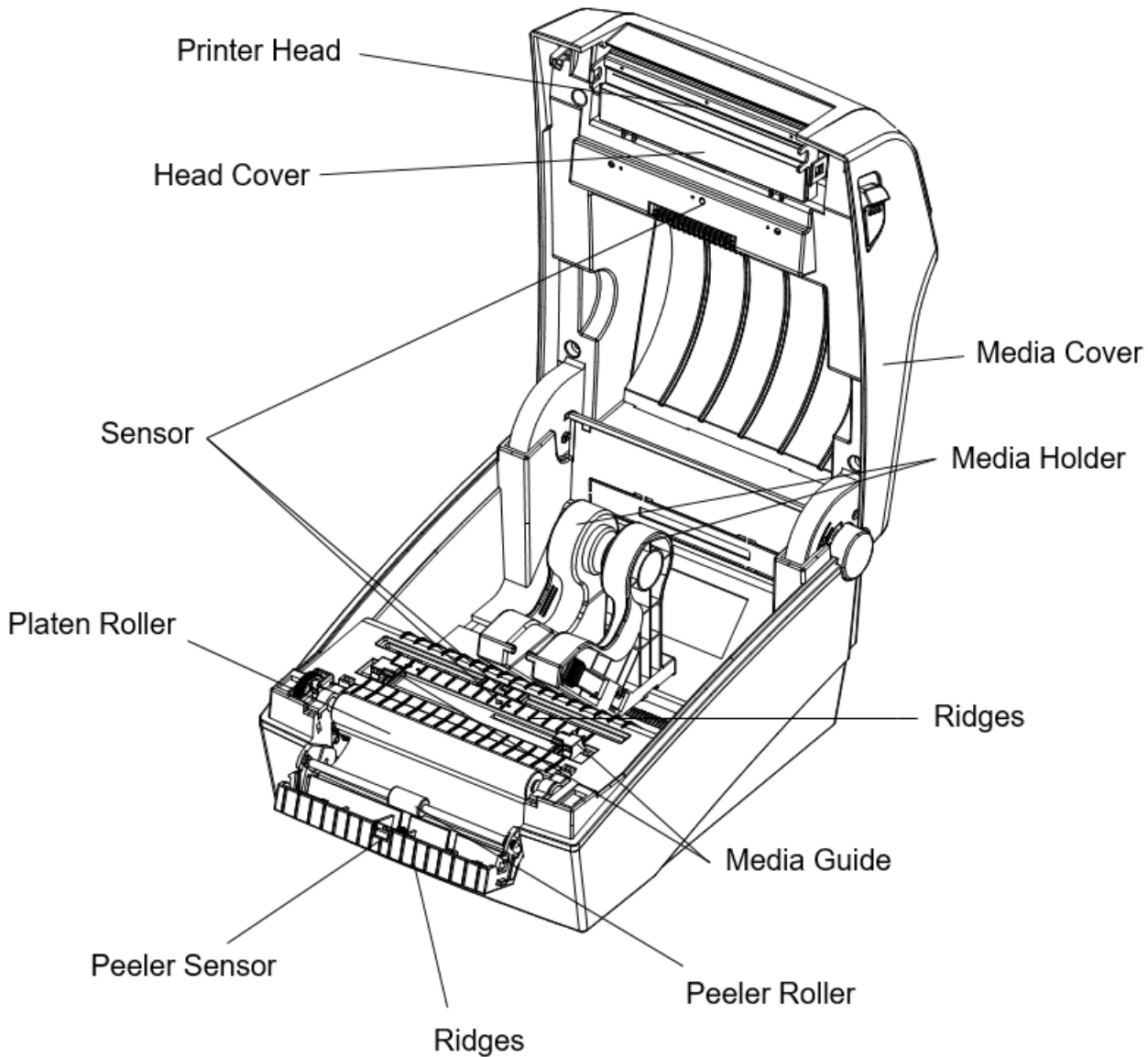


5. Close the cover.

 We recommend cleaning the printhead after each roll of supply.

Cleaning the Sensors, Roller, and Paper Path

1. Turn off the printer.
 2. Open the cover and remove supplies.
 3. Remove dust or debris using a dry cloth or cotton swab.
 4. Moisten the cloth or cotton swab with isopropyl alcohol to remove adhesive.
 5. Allow the cleaned parts to dry completely (1~2 min) before use.
- 👉 Clean the identified parts when there is reduced print quality or supply sensing.



7 Printer Specifications

Item		Description
Printer	Printing Method	Thermal Direct Printing
	Dot Density	203 dpi (8 dot/mm)
	Printing Width	Max. 108 mm (Max. 4.25")
	Printing Speed	Max. 178 mm/sec (Max. 7ips)
Supplies	Width	15 ~ 118 mm (0.59 ~ 4.64")
	Roll	Max 127mm (Max. 5")
	Core	12.5 ~ 38.1mm (0.5 ~ 1.5")
AC Adapter	Input Voltage	AC 100 ~ 240V
	Frequency	50/60 Hz
	Output Voltage	DC 24V ± 5%
	Output Current	2.5A
Usage Conditions	Temperature	Operating: 32~104°F (0 ~ 40°C) Storage: -4~140°F (-20 ~ 60°C)
	Humidity (except for paper)	10 ~ 80 % RH (Operating) 10 ~ 90 % RH (Storage)



- Print speed can vary based on data transmission speed and/or the combination of control commands.
- The printer is for indoor use only.
- If the printer malfunctions, turn it off and unplug it from the wall. Call Technical Support.